



Your Science-First, Not-for-Profit Preclinical CRO

Lovelace Biomedical is a not-for-profit preclinical CRO that partners with pharmaceutical, biotech, government, and academic organizations to advance novel therapies toward the clinic.

By combining state-of-the-art high-containment laboratories with a culture of hands-on scientific leadership, Lovelace designs and executes high-quality, custom-built preclinical programs—ranging from investigational gene therapies to high-consequence infectious disease studies.

Why Work with Us?

Custom-built studies for complex challenges

Expertise in difficult-to-study areas where off-the-shelf CRO solutions simply don't exist.

Deep multidisciplinary expertise

Decades of domain mastery and expertise applying rigorous, translationally relevant methods across 100+ disease models.

Agile, adaptable partner

Rapid proposal turnaround, streamlined contracting, and real-time adaptation during studies — without the bureaucracy of larger CROs.

Collaborative and transparent

Focused on understanding each client's goals and designing studies that meaningfully advance therapies toward IND-enabling success.

Upfront scientific guidance

Our advisors, each with more than 20 years industry experience, offer advisory input before contracting — helping teams without full internal expertise navigate IND-enabling expectations.

Scientific and ethical leadership

Driven by scientific integrity, quality, and transparency — not shareholder pressures. We reinvest deeply in basic science, infrastructure, and technology to continually enhance our research capabilities.

Ethical, responsible animal welfare

AAALAC-accredited since 1970, with OLAW assurance and USDA certification.

Core Capabilities



Toxicology

70 years of exploratory to GLP-compliant regulatory toxicology across small and large species.



Bioanalytical & Analytical Chemistry

Method development, validation, and sample analysis with specialized lab support.



Formulation & Dosing

Preparation of simple to complex formulations enabling IV, IM, inhalation, intrathecal, intracerebral, ocular, and other specialized routes.



PK/TK & Biodistribution

Comprehensive characterization including radiolabeling, metabolite tracking, and modeling.



Pharmacology

Expertise in 100+ animal models across respiratory, CNS, infectious disease, radiation injury, and other therapeutic areas.



Colony Maintenance

Extensive vivarium capacity supporting short- and long-term housing for small and large species.

Laboratory & Facility Facts



Campus & Security Overview

- Bio-secure facility in Albuquerque, New Mexico
- 300,000 sq. ft. on 100 acres
- Applied science and research facilities on site
- Single-site structure supports communication and alignment across research and ops



High-Containment & Specialized Laboratory Capabilities

- 10,000+ sq ft of ABSL3-enhanced
- Multi-species support capabilities
- Fully GLP-compliant and onsite QA
- Remote telemetry
- State-of-the-art necropsy suite
- Dedicated microbiology and virology labs



Animal Housing & Welfare Ecosystem

- Extensive vivarium infrastructure
- 90 animal rooms (multi-species)
 - Dedicated behavioral management and enrichment teams
 - Specialty food-grade enrichment kitchen
 - AAALAC-accredited, OLAW-assured and USDA-registered

Specialty Areas



Respiratory

A global leader in inhalation toxicology and aerosol science, Lovelace Biomedical develops custom exposure systems and supports programs spanning asthma, COPD, acute lung injury, and inhaled therapeutics.



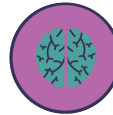
Infectious Disease

ABSL3-enhanced labs, aerosol exposure suites, viral and bacterial challenge models, remote telemetry, and select-agent experience equip us for complex high-containment studies.



Gene-Cell Therapy

More than a decade of AAV and vector toxicology, including 25+ NIH-supported IND-enabling studies and advanced expertise in novel dosing routes.



Neuroscience

Through collaboration with The Mind Research Network, Lovelace Biomedical supports neurological and behavioral research integrated with advanced imaging capabilities.



Alternative Tobacco & Nicotine Products

More than 25 years of expertise studying the health effects of cigarette and nicotine exposure.



Medical Countermeasures

Extensive experience evaluating chemical, biological, radiological, nuclear and explosive threat-agent countermeasures. Support Animal Rule submissions.

Partner with Us

Lovelace Biomedical helps innovators safely and successfully advance therapies to the clinic - especially when programs demand specialized, high-containment, or custom solutions.

Contact: LovelaceBD@lovelacebiomedical.org

