



## WHO ARE WE

### Lovelace Biomedical is a Preclinical Toxicology Contract Research Organization

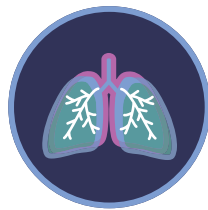
- We perform non-GLP and GLP programs from early concept, IND, NDA, CARCI
- We have a single site with broad & specialty expertise capabilities
- We are a small company with big company ability
- We are leaders in nonclinical development for respiratory and gene therapies

## KEY AREAS OF EXPERTISE

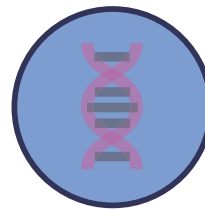
GLP Toxicology



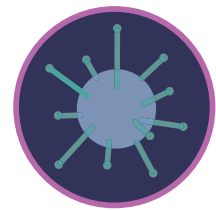
Respiratory Drug Development



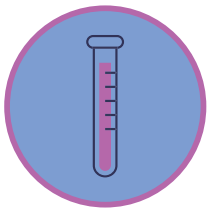
Gene Therapy



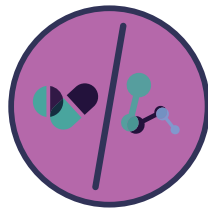
Infectious Disease



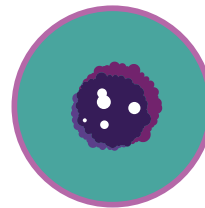
Bioanalytical



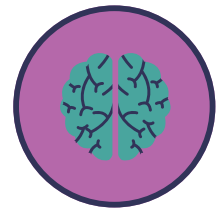
Custom Pharmacology



Medical Countermeasures



CNS - Neuroscience



## CULTURE & CORE VALUES

- Ethical, responsible, and compliant animal welfare
- Scientific and ethical leadership and integrity in everything we do
- Quality, compliance, and transparency are paramount to delivering research services
- Our People matter - talent and passion for service and execution allows us to deliver on commitments