



## FAST FACTS

### SPECIALTY EXPERTISE:

- GLP Toxicology and Pharmacology
- Gene Therapy and Regenerative Medicine
- Infectious Disease and Vaccine Development
- Disease Models and Colony Maintenance
- Aerosol Delivery and Inhalation Toxicology
- Lung Biology and Respiratory Disease
- Neuroscience, Imaging, and Advanced Data Analysis
- Medical Countermeasures
- Dermatitis
- Animal Health



AAALAC  
Accredited Animal Facilities



15+ years

running complex IND-enabling programs to support gene therapy development



70+  
Years Inhalation Toxicology Experience



250+

Lovelace Biomedical staff experienced with pre-IND gene therapy programs



Custom  
study designs and specialty routes available



400,000

Square feet lab space, including GLP-compliant operations



## WHO ARE WE

### Lovelace Biomedical is a Preclinical Toxicology Contract Research Organization

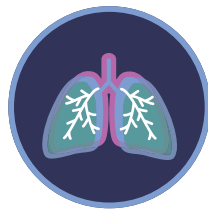
- We perform non-GLP an GLP programs from early concept, IND, NDA, CARCI
- We have a single site with broad & specialty expertise capabilities
- We are a small company with big company ability
- We are leaders in nonclinical development for respiratory and gene therapies

## KEY AREAS OF EXPERTISE

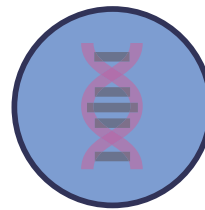
GPL Toxicology



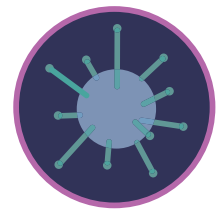
Respiratory Drug Development



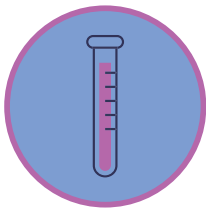
Gene Therapy



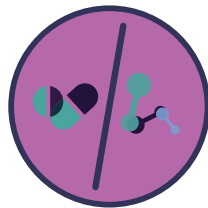
Infectious Disease



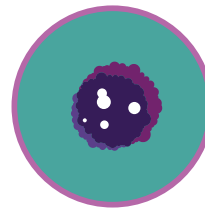
Bioanalytical



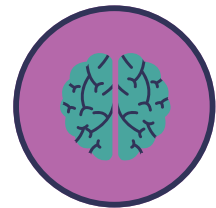
Custom Pharmacology



Medical Countermeasures



CNS - Neuroscience



## CULTURE & CORE VALUES

- Ethical, responsible, and compliant animal welfare
- Scientific and ethical leadership and integrity in everything we do
- Quality, compliance, and transparency are paramount to delivering research services
- Our People matter - talent and passion for service and execution allows us to deliver on commitments