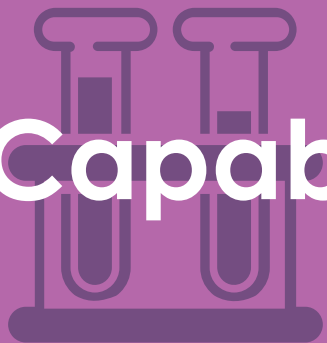


Lovelace Biomedical has extensive expertise in bioanalytical chemistry, with specialized laboratories and experienced bioanalytical method development/validation and sample analysis chemists. Whether working with a small molecule, or qPCR bioanalysis Lovelace has experience developing new assays or transferring existing methods. These methods can support pharmacokinetic, toxicokinetic, biodistribution, and in vivo metabolism studies. The analyses can be conducted to evaluate parent molecules or metabolites in a full range of matrices, including blood, plasma, serum, urine, CSF, pleural fluid and tissue. Whether your study is an exploratory research study or a GLP toxicology study Lovelace has the Bioanalytical team to support your needs.

Key Capabilities



- Method Transfer
- Method Development
- Method Validation per FDA/EMA

Instrumentation

Mass Spectrometer Systems

- Sciex API 4000, 5000, 4500, and 5500's. All with uHPLC's

Gas Chromatography

- Agilent 7890 and 6890, MS, TCD & ECD detectors, liquid and head autosampler

Liquid Chromatography

- Agilent 1100/1200, MS; DAD, VWD, RID, FLD detectors
- Waters Acquity UPLC equipped with PDA; FLD, ECD detectors

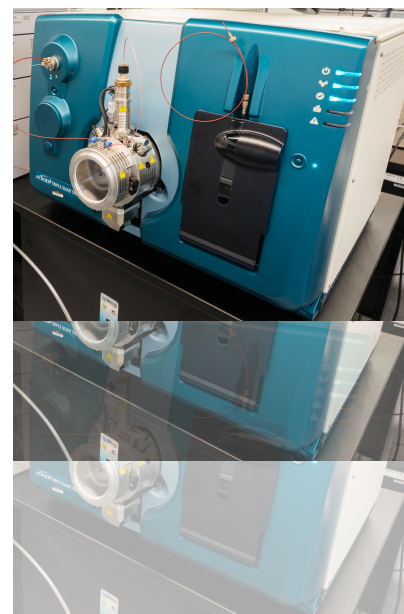
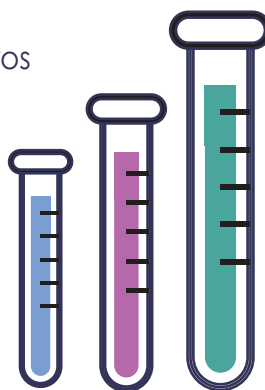
ELISA Systems

- Luminex MagPix
- Molecular Diagnostics i3x Plate Reader

Tecan/Eppendorf Liquid Handlers

TomTec Quadra Extraction System

Quantative PCR



Key Publication

Tyler Sniegowski, Philip J. Kuehl, Larry M. Mallis, and Steve Belinsky (2019) A Rapid and Selective Method for 5-Azacytidine in Rat Plasma, Lung, Brain, and Liver Using LC-MS/MS, 67th ASMS Conference on Mass Spectrometry and Allied Topics, Atlanta, GA, June 2-6, 2019.